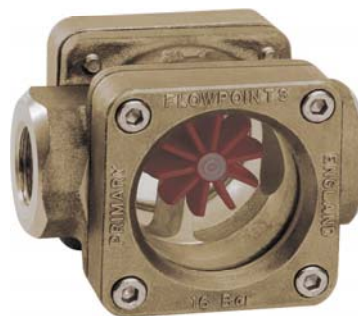


GENERAL CHARACTERISTICS

Mechanical Flow Indicator for liquids with twin rotors for quantitative flow indication. The rotor provides a directly flow-proportional indication of the actual flow rate. Rugged design in bronze/brass combination.

- * double-faced windows for comfortable reading
- * optional installation

Female thread G1/2 to G1 bronze



FR-015GR

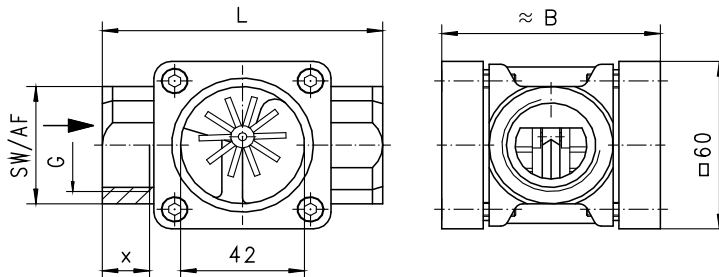
TECHNICAL DATA

	G	Type	PN bar	start of rotor l/min H ₂ O	Qmax. recom. l/min H ₂ O	L mm	B mm	AF mm	X mm	weight kg
bronze	G 1/2	FR-015GR	16	2.5	25	85	68	36	14	1.20
	G 3/4	FR-020GR	16	3.0	45	85	68	36	14	1.10
	G 1	FR-025GR	16	5.0	65	95	74	42	16	1.25

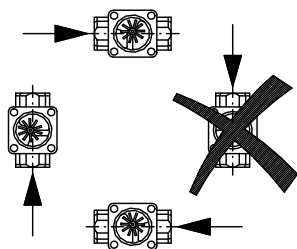
media temperature max. 100°C
average pressue loss 0.09 bar at Qmax.

MATERIALS

body bronze Rg5
ring brass Ms58
window soda-lime natural glass
bolt stainless steel 1.4305
rotor POM
seal klingersil C4400



MOUNTING POSITION



NOMENCLATURE

FR-	015	G	R	basic type specification
	015			● nominal diameter DN 15 - G1/2
	020			● nominal diameter DN 20 - G3/4
	025			● nominal diameter DN 25 - G1
		G		● female thread
			R	● bronze

SPECIAL DESIGNS

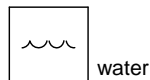
type RS...GR
female thread G1/4 bis G2
rotor brass
housing bronze

type RS...FG
flange DN 25 to 80
rotor brass
housing cast iron



RS-040FG

METERING SUBSTANCES



water



oil With higher viscosity instruments tend to higher starting values for rotor.

All technical changes reserved

IBASIC Standard ○BASIC Programme option □VARIO Special option ⊕ PLUS Accessories

✗ not recommendable