

GENERAL CHARACTERISTICS

The oval wheel flowmeters are used to measure, monitor and meter viscous liquids.

- * compact
- * viscosity range 10-800mm²/s
- * option transparent cover

Female thread G1/4 to G3/4 POM

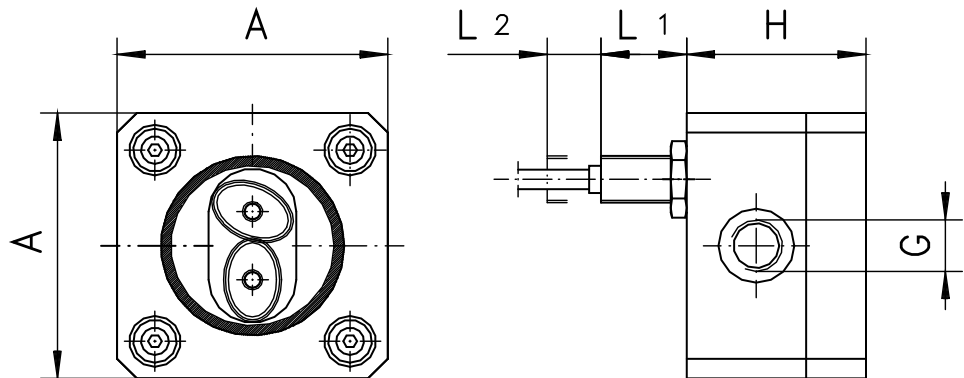


VHO-008GPT

TECHNICAL DATA

| | G | Type | PN bar | Qmax. rec. l/min | measuring range l/min | | | | pulse/litre | weight kg |
|-----|-------|---------------|--------|------------------|-----------------------|-----------------------|-----------------------|-----------------------|-------------|-----------|
| | | | | | 10mm ² /s | 100mm ² /s | 320mm ² /s | 800mm ² /s | | |
| POM | G 1/4 | VHO-008GP.080 | 10 | 12 | 0.3 - 8.0 | 0.3 - 8.0 | 0.2 - 5.0 | 0.1 - 2.0 | 429 | 0.4 |
| | G 1/4 | VHO-008GP.100 | 10 | 12 | 0.4 - 10.0 | 0.4 - 10.0 | 0.3 - 8.0 | 0.15 - 4.0 | 224 | 0.4 |
| | G 1/2 | VHO-015GP.250 | 10 | 30 | 1.0 - 25.0 | 1.0 - 25.0 | 1.0 - 25.0 | 0.4 - 10.0 | 52,5 | 0.7 |
| | G 3/4 | VHO-020GP.400 | 10 | 50 | 1.6 - 40.0 | 1.6 - 40.0 | 1.6 - 40.0 | 0.95 - 24.0 | 28 | 1.1 |

tolerance ±2,5% off full scale
media temperature -10...+60°C
average pressure loss 1bar at max. nominal flow rate



MATERIALS

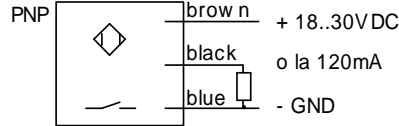
housing POM
cover POM, option PMMA (transparent)
oval wheel POM
signal initiator 1.4301
axle 1.4301
seal NBR

| Type | G | A mm | H mm | L1 mm | L2 mm |
|---------------|-------|------|--------|-------|-------|
| VHO-008GP.080 | G 1/4 | 68 | 45 | 21,5 | 13,5 |
| VHO-008GP.100 | G 1/4 | 68 | 49 | 21 | 14 |
| VHO-015GP.250 | G 1/2 | 99 | 71 * | 19 | 16 |
| VHO-020GP.400 | G 3/4 | 119 | 84,5 * | 17 | 18 |

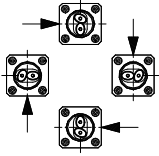
* with transparent covers +3mm

ELECTRICAL DATA

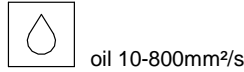
inductive sensor
PNP, asymmetrically 18..30 V DC max. 120mA (typ. 10mA)
cable 2 m
protection class IP 65



MOUNTING POSITION



METERING SUBSTANCES



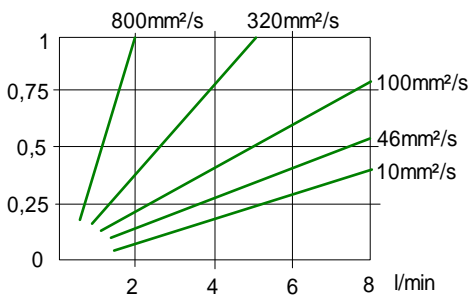
NOMENCLATURE

| VHO- | 008 | G | P | P | 080 | P | basic type specification |
|------|-----|---|---|---|-----|---|-------------------------------------|
| | 008 | | | | | | ● nominal diameter DN 8 - G1/4 |
| | 015 | | | | | | ● nominal diameter DN 15 - G1/2 |
| | 020 | | | | | | ● nominal diameter DN 20 - G3/4 |
| | | G | | | | | ● female thread |
| | | | P | | | | ● housing material POM |
| | | | A | | | | ○ housing material Aluminium |
| | | | | P | | | ● cover material POM |
| | | | | T | | | ○ cover material PMMA (transparent) |
| | | | | A | | | ○ cover material Aluminium |
| | | | | | 080 | | ● measuring range 0.3 - 8 l/min |
| | | | | | 100 | | ● measuring range 0.4 - 10 l/min |
| | | | | | 250 | | ● measuring range 1.0 - 25 l/min |
| | | | | | 400 | | ● measuring range 1.6 - 40 l/min |
| | | | | | | P | ● exit PNP |
| | | | | | | A | ○ exit Namur |

PRESSURE LOSS

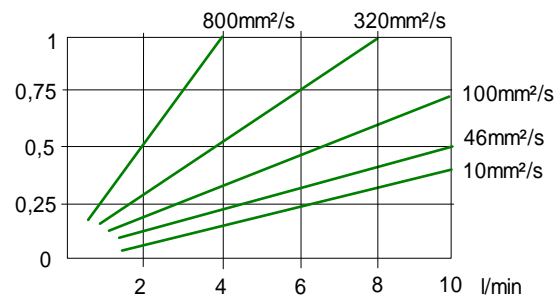
VHO-008GP.080

pressure loss / bar



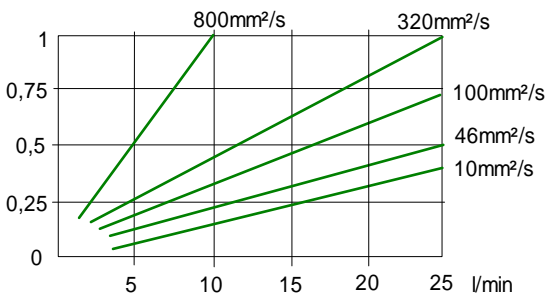
VHO-008GP.100

pressure loss / bar



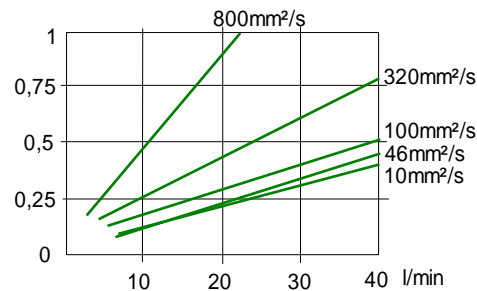
VHO-015GP.250

pressure loss / bar



VHO-020GP.400

pressure loss / bar



All technical changes reserved

●BASIC Standard ○BASIC Programme option □VARIO Special option ⊕ PLUS Accessories ✗not recommendable