

GENERAL CHARACTERISTICS

Mechanical Flow Indicator as sight glass for contaminated or coloured substances. Rugged design in brass / bronze combination.

- * no moving parts
- * optional installation
- * optical control of liquid quality
- * for contaminated or coloured liquids
- * double-faced, wide windows
- * natural glass

Female thread G1/2 to G1 bronze

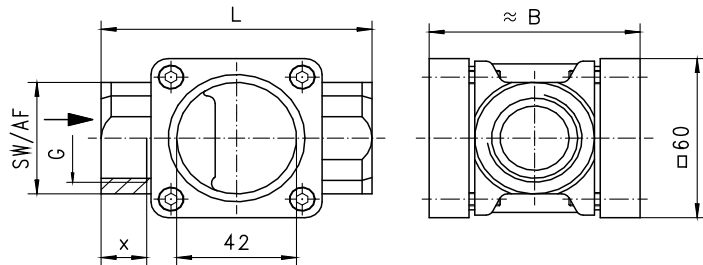


FH-015GR

TECHNICAL DATA

	G	Type	PN bar	Qmax. recom. l/min H ₂ O	L mm	B mm	AF mm	X mm	weight kg
bronze	G 1/2	FH-015GR	16	25	85	68	38	14	1.20
	G 3/4	FH-020GR	16	45	85	68	38	14	1.10
	G 1	FH-025GR	16	65	95	74	42	16	1.25

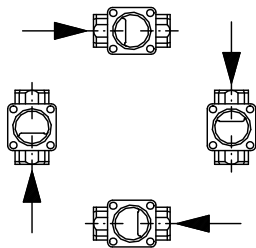
media temperature water max. 100°C
 oil max. 200°C
 average pressure loss 0.06bar at Qmax.



MATERIALS

body bronze Rg5
 ring brass Ms58
 window soda-lime glass
 seal klingsil C4400

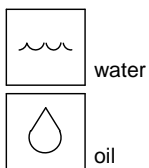
MOUNTING POSITION



NOMENCLATURE

FH-	015	G	R	basic type specification
	015			● nominal diameter DN 15 - G1/2
	020			● nominal diameter DN 20 - G3/4
	025			● nominal diameter DN 25 - G1
		G		● female thread
			R	● bronze

METERING SUBSTANCES



All technical changes reserved

●BASIC Standard ○BASIC Programme option □VARIO Special option ⊕ PLUS Accessories ✗ not recommendable