

**GENERAL CHARACTERISTICS**

Mechanical Level Switch for liquids. A magnet-equipped float triggers a reed switch in a pre-fixed position.

- \* top or bottom assembly for min. or max. control
- \* reliable
- \* good repeatability

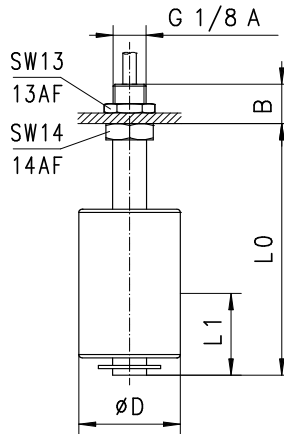
Male thread G1/8A stainless steel/spansil



**TECHNICAL DATA**

	NMS-004HM40		NMS-004HM47		NMS-004HM77				
	G	Type	liquid density g/cm <sup>3</sup>	PN bar	L0 mm	L1 mm	D mm	B mm	weight g
Messing	G 1/8 A	NMS-004HM40	≥0.40	12	40	20	30	10	55
	G 1/8 A	NMS-004HM47	≥0.38	12	47	20	20	12	65
	G 1/8 A	NMS-004HM77	≥0.34	12	77	34	30	10	75

media temperature max. 105°C

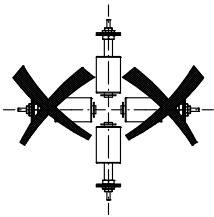


Instrument is supplied without seal!

**MATERIAL**

body brass Ms58  
float spansil  
nuts bronze / NMS-004HM47 stainless steel

**MOUNTING POSITION**

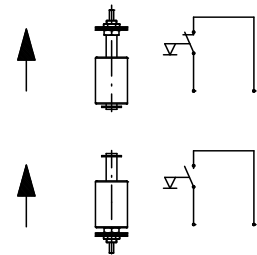


Installation position influences operation!

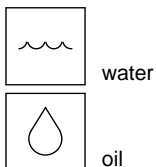
**ELECTRICAL DATA**

reed switch  
wiring 0.225  
n.c. or n.o. depending on installation position  
cable 1.5 m  
NMS-004HM40 - 300 V AC 0,5 A 70 VA  
NMS-004HM47 - 300 V AC 0,5 A 70 VA  
NMS-004HM77 - 250 V AC 1,3 A 80 VA  
protection class IP 65

Operation can be modified by reversing the position of the float.



**METERING SUBSTANCES**



**NOMENCLATURE**

NMS-	004	H	M	40	Beispiel Beschreibung
	004				● male thread G1/8A
		H			● connection thread
			M		● brass
				40	● length 40 mm
				47	● length 47 mm
				77	● length 77 mm

All technical changes reserved

●BASIC Standard ○BASIC Programme option □VARIO Special option ⊕ PLUS Accessories ✗ not recommendable